

SV0 Control station

With folding seat optimal for small cabins.



SV0 control stations and control station units for controlling machines and cranes.

The non-rotating SV0 control stations are equipped with a robust bridge made of metal. It is fixed directly to the cabin floor and serves as a support for the side consoles and the seat. For the side consoles, different console shapes can be selected, either consoles with column or side

consoles with large installation space and laterally removable covers. Depending on the width of the bridge, different seats can be combined. The side collapsible seats of the KS series are optimal for small cabins, they offer the machine operator safe access to his workplace between the folded seat and the side console. Optionally, comfort seats, mounted on the bridge are available for long working days.

SV0 Control station units

Optimal for narrow cabins.



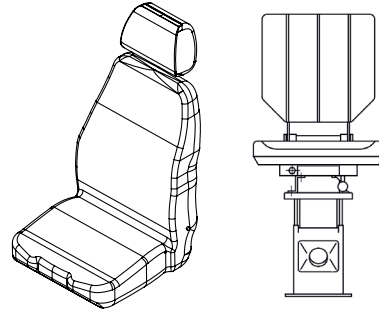
We supply SV0 control station units separately or as a pair, they are mounted directly onto the cabin floor without a bridge. This allows an optimal space adaptation to the operating area. The consoles are available in plastic or metal, the column is made of metal and powder-coated in grey colour.

Basically, the consoles have a hinged lid with lock and allow the installation of joysticks and control devices in the lid. Inside the console, there can be installed terminal blocks and electronic modules. The robust and solid constructions guarantee a long service life under rough operating conditions in a wide range of applications.

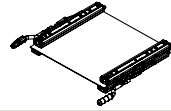
Line-up:

Seat tops/seats

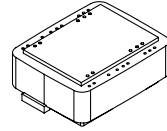
Sheet Si-S722
Si-S700
Si-KS

**Longitudinal seat adjustments**

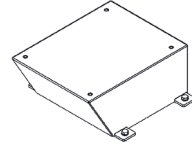
Sheet S-SV0-5/7

**Suspensions**

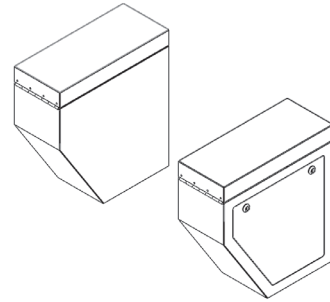
Sheet S-SV0-5/7

**Substructure for suspension**

Sheet S-SV0-5/7

**Side consoles/control station units**

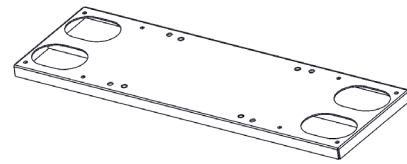
Sheet S-SV0-4/7 / S-SV0-6/7

**Armrests**

Sheet S-SV0-7/7



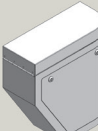

**Bridge**

Sheet S-SV0-5/7

**Control stations****Side consoles**

Common features:

- For mounting on a bridge
- Side consoles with:
 - Grey colour scheme, powder-coated metal parts
 - Hinged lid
 - Hinges
 - Closure or locking clips
 - Seal between upper and lower part
 - Without attachments and inserts
 - Without drillings, cut-outs in the console covers

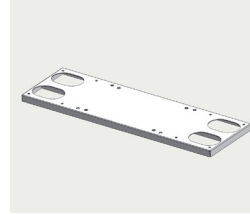
Console shape	Version	Side consoles (WxLxH)	Picture
K	Side consoles with column for mounting on bridge Hinges rear	Plastic material 224 x 430 x 120 mm	
S	Side consoles with column for mounting on bridge Hinges front	Sheet steel powder coated 220 x 440 x 120 mm	
GI	Side consoles with removable side panels on the inside Hinges front	Sheet steel powder coated 210 x 500 x 542 mm	
GA	Side consoles with removable side panels on the outside Hinges front	Sheet steel powder coated 210 x 500 x 542 mm	

Control stations

Bridge

Common features:

- For mounting of side consoles (see S-SV0-4/7)
- Metal
- Powder coated grey colour
- Openings for cable routing
- Mounting holes for floor mounting



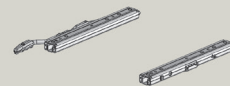
Version bridge	Dimensions (WxDxH)	Suitable for console shape	Suitable for seat, seat top
B826	826 x 300 x 28 mm	K, S	KSxx
B920	920 x 300 x 28 mm	GI	KSxx
B960	960 x 300 x 28 mm	GA	S722, S700

Seats/seat tops		See price list	Notes
KSxx	Seat	Si-KS	Bridge mounting
S722	Seat top	Si-S722	Additional equipment for mounting see S-SV0-5/7
S700	Seat top	Si-S700	Additional equipment for mounting see S-SV0-5/7

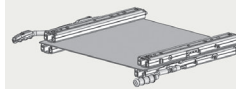
Additional parts for mounting seat top S722, S700 on bridge:

Longitudinal seat adjustment:

Simple longitudinal seat adjustment
Pair of rails SM11618-L for longitudinal adjustment of seat top in relation to seat base

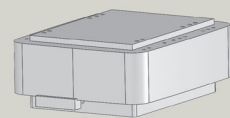


Double longitudinal seat adjustment
Unit consisting of 2 sets of longitudinal adjustment rails mounted on an intermediate plate.

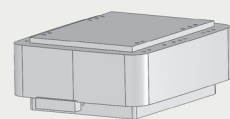


Mechanical suspension:

F
Mechanical suspension with 4-level height adjustment suitable for seat S722

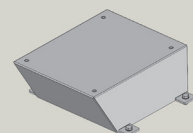


F85
Mechanical suspension with 3-level height adjustment suitable for seat S700



Substructure for suspension

for seat height adjustment
Metal, powder coated



Control station units

- Rectangular column with flange plate for floor mounting
- Rectangular consoles:
 - Total height approx. 575 mm (top of lid)
 - Grey colour, metal parts powder-coated
 - Hinged lid
 - Hinges
 - Closure resp. locking clips
 - Seal between top and bottom part
 - Without attachments and inserts
 - Without drillings, cut-outs in the console covers

Control station unit	Version	Consoles (WxLxH)	Picture
SV0NK	Left hand side Hinges rear	Plastic 224 x 430 x 120 mm	
SV0UK	Right hand side Hinges rear	Plastic 224 x 430 x 120 mm	
SV0NS	Left hand side Hinges front	Sheet steel powder-coated 220 x 440 x 120 mm	
SV0US	Right hand side Hinges front	Sheet steel powder-coated 220 x 440 x 120 mm	

Note:

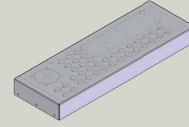
Suitable seats for control station units see Si-KS.

Options for control stations and control station units

Holes, cutouts in the console covers, including layout creation:

Standard for 2 side consoles: includes each side: 1 x hole for joystick, max. 10 x holes \varnothing 22,5 mm for control devices.

Complex layout (not covered by standard)

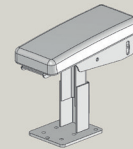


Armrests for mounting on side consoles

AS1-18

Armrest 180 x 80 mm

Height adjustable, longitudinally adjustable, tiltable



Inserts:

Control devices

Joysticks

Wiring:

Single core, max. 1.5 mm², 2 clamping points, wire end marking on both sides (from joystick to PLC, PLC in the side consoles, please note dimensions)

Single core, max. 1.5 mm², 2 clamping points, wire end markings on both sides, 1 terminal (from joystick to terminal, terminals in the bridge or in the side panels)